



Product End-of-Life Disassembly Instructions

Product Category: Notebook

Marketing Name / Model
 [List multiple models if applicable.]

MPS LUMI Series

Purpose: The document is intended for use by end-of-life recyclers or treatment facilities. It provides the basic instructions for the disassembly of products to remove components and materials requiring selective treatment, as defined by EU

1.0 Items Requiring Selective Treatment

1.1 Items listed below are classified as requiring selective treatment.

1.2 Enter the quantity of items contained within the product which require selective treatment in the right column, as applicable.

1.3 The product includes large capacity storage devices, storage devices can be connected by interface insertion way.

Item Description	Notes	Quantity of items included in product
Printed Circuit Boards (PCB) or Printed Circuit Assemblies (PCA)	With a surface greater than 10 sq cm M/B, IO Board, Touchpad Module, Adapter board, LCD Tcon board	5
Batteries	lithium Battery	1
Mercury-containing components	For example, mercury in lamps, display backlights, scanner lamps, switches, batteries	0
Liquid Crystal Displays (LCD) with a surface greater than 100 sq cm	LCD	1
Cathode Ray Tubes (CRT)		0
Capacitors / condensers (Containing PCB/PCT)		1
Electrolytic Capacitors / Condensers measuring greater than 2.5 cm in diameter or height		1
External electrical cables and cords	AC Power cord	1
Gas Discharge Lamps		0
Plastics containing Brominated Flame Retardants weighing > 25 grams (not including PCBs or PCAs already listed as a separate item above)		0
Components and parts containing toner and ink, including liquids, semi-liquids (gel/paste) and toner	Include the cartridges, print heads, tubes, vent chambers, and service stations	0
Components and waste containing asbestos		0
Components, parts and materials containing refractory ceramic fibers		0
Components, parts and materials containing radioactive substances		0

2.0 Tools Required

List the type and size of the tools that would typically be used to disassemble the product to a point where components and materials requiring selective treatment can be removed.

Tool Description	Tool Size (if applicable)
Description #1 Plum Screwdriver	#1
Description #2 combination cut pliers	#1
Description #3	
Description #4	
Description #5	

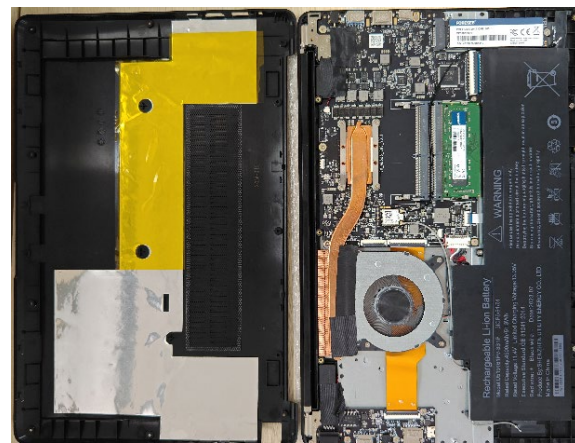
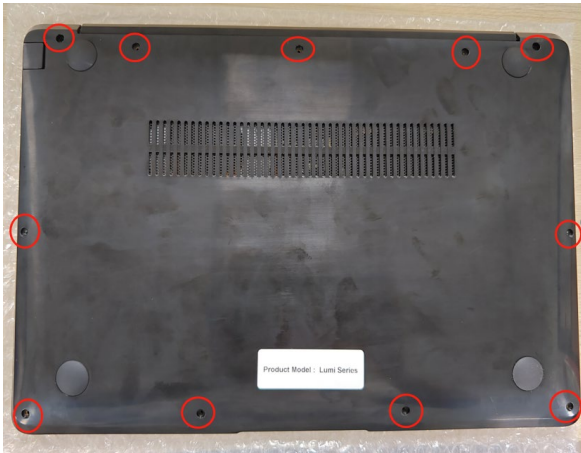
3.0 Product Disassembly Process

3.1 List the basic steps that should typically be followed to remove components and materials requiring selective treatment:

1. Remove the bottom shell screws * 11
2. Disassemble the D shell
3. Disassemble the battery strip and remove the battery screws * 5
4. Remove the SSD screws and remove the SSD
5. Disassemble the memory module and remove it
6. Remove the fan screws and remove the fan
7. Disassemble the screws of the heat dissipation module and remove the heat dissipation module
8. Disassemble the horn and remove it
9. Disassemble the antenna and remove it
10. Remove the IO cable, touchpad cable, keyboard cable, and screen cable
11. Remove the motherboard screws and remove the motherboard
12. Remove the IO board screws and remove the IO board
13. Remove the motherboard screws and remove the motherboard
14. Remove the rotating shaft screws and remove the AB component
15. Remove the screws from the AB component and remove the B shell
16. Remove the screen screws and remove the display screen and camera
17. Remove the shaft screws and remove the shaft
18. Disassemble the touchpad and remove it

3.2 Optional Graphic. If the disassembly process is complex, insert a graphic illustration below to identify the items contained in the product that require selective treatment (with descriptions and arrows identifying locations).

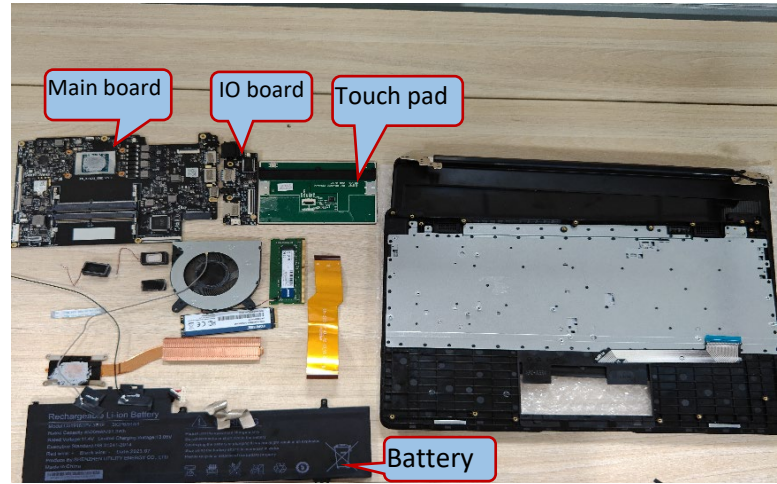
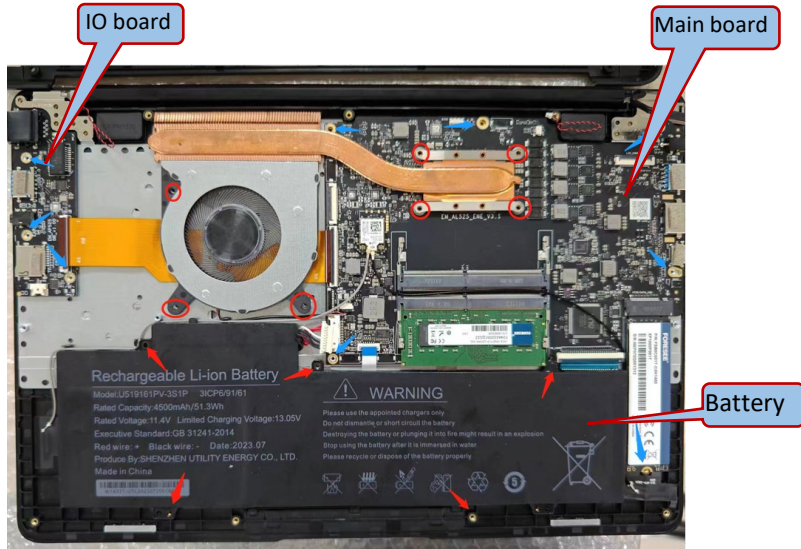
1. Remove the screws from the D shell



2. Disassemble the battery strip and used a screwdriver remove the battery screws, heat dissipation module, fan, SSD, motherboard, and small board screws.

2.1, Battery disassembly

- ① Prepare shell c and screwdriver;
- ② Disassemble the battery strip;
- ③ Use a screwdriver to unscrew the screw*5 which are used for fixing the battery ;
- ④ Remove the battery.



3. Remove AB component



4. Remove the LCD camera and rotate the shaft



5. Adapter disassembly

- ① Prepare scissors and adapters to be disassembled;
- ② Use scissors to forcefully cut along the gap of the adapter;
- ③ Separate the upper cover, lower cover, and circuit board.

